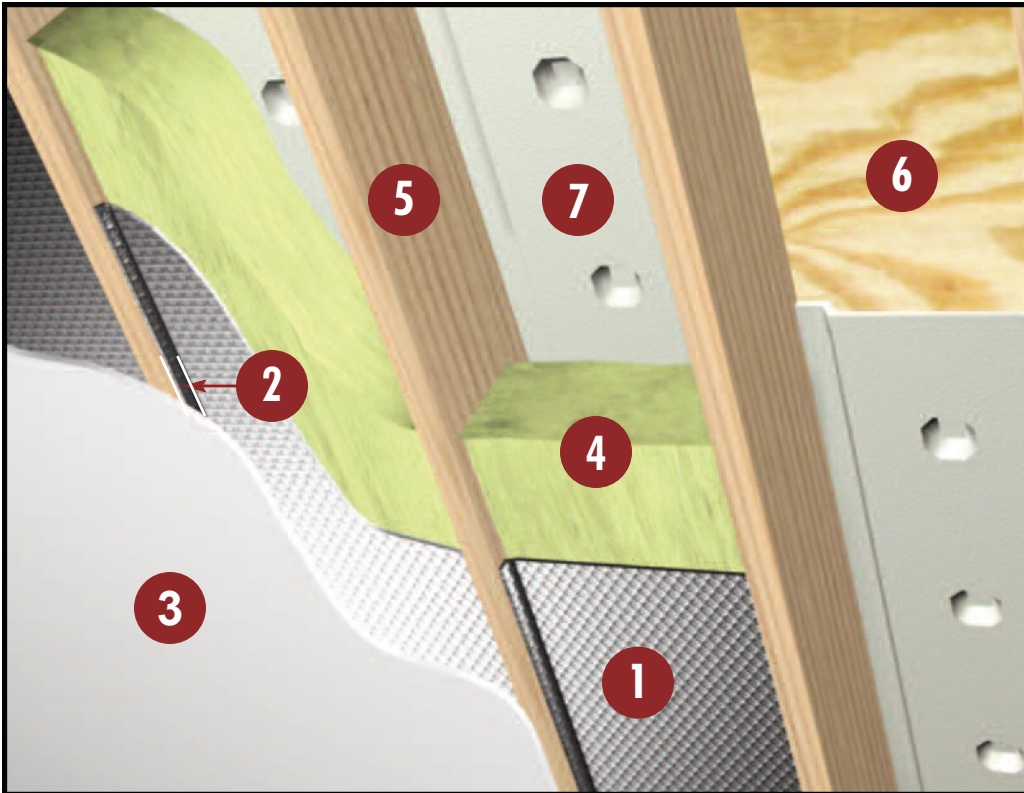


# Cathedral Ceiling

## InfraStop® Installation Instructions

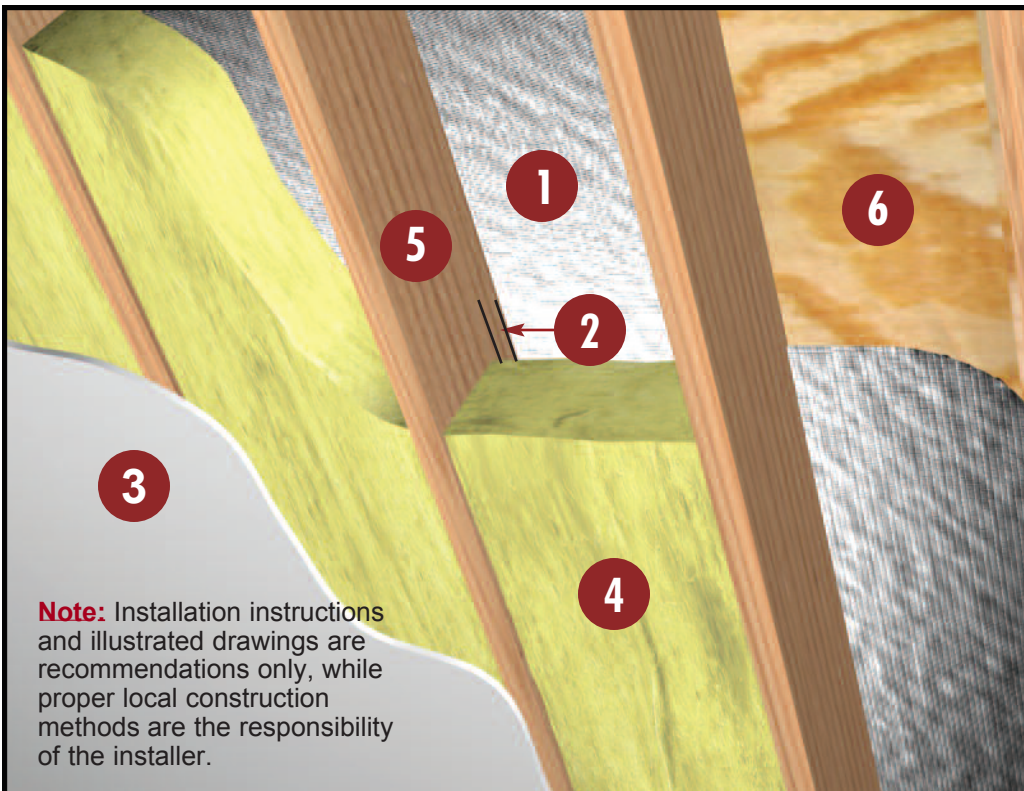


Northern Zone of the USA -With  
InfraStop® Below the Mass  
Insulation • R-7.0 Summer & R-1.0  
Winter and a Vapor/Moisture Barrier

1. InfraStop® Insulation
2. Continuous 0.75" Air Space (minimum)
3. Sheet Rock
4. Fiberglass Insulation (non-compressed)
5. Rafter
6. Roof Decking
7. Rafter Cavity Vent

### Tools Required:

Safety Glasses  
Staple Gun  
Tape Measure  
Utility Knife/Scissors



Southern Zone of the USA -With  
InfraStop® Above the Mass  
Insulation • R-6.0 Summer & R-2.0  
Winter or a Radiant Barrier -  
Blocks 96% Radiant Heat

1. InfraStop® Radiant Barrier
2. Continuous 0.75" Air Space (minimum)
3. Sheet Rock
4. Fiberglass Insulation (non-compressed)
5. Rafter
6. Roof Decking

### Tools Required:

Safety Glasses  
Staple Gun  
Tape Measure  
Utility Knife/Scissors

**Note:** Installation instructions and illustrated drawings are recommendations only, while proper local construction methods are the responsibility of the installer.

## **Recommended Products:**

**Reflective/Bubble/Bubble/Reflective - Roll: ISFDF24050 (24"x 50'), ISFDF24100 (24"x 100'), ISFDF48050 (48"x 50'), ISFDF48100 (48"x 100')  
Staple Tab, Reflective/Bubble/Bubble/Reflective - Roll: ISSTFDF16050 (16"x 50'), ISSTFDF16100 (16"x 100') ISSTFDF24050 (24"x 50'), ISSTFDF24100 (24"x 100')  
Radiant Barrier, Reflective/Woven Fabric/Reflective - Roll (Heavy Duty):  
ISRBIR48125P (48"x125')**



### **Reflective Insulation Installation Instructions: (There are 2 options)**

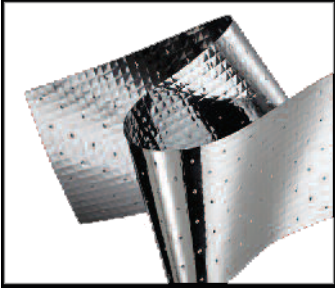
#### **1. Directly to Roof Deck - Above Fiberglass - Southern Zone of the USA Only**

- Benefit - R-6.0 Summer & R-2.0 Winter
- It is easiest to install either 16" or 24" wide product (depending on rafter spacing).
- Begin at the top of the cavity. Run product flush to the decking, parallel to the rafter.
- Staple sheet directly to the deck (Nails poking through the InfraStop<sup>®</sup> product from above will not interfere with performance).
- Do not block any venting (cut around).
- No need to cover rafters (no loop around).
- Ensure that a continuous air space (0.75 inch minimum) is on the bottom side of the InfraStop<sup>®</sup> product (required and for ventilation).
- Install venting and mass insulation per local codes and manufacturer's installation instructions.

#### **2. Attached to the Lower Edge of the Rafter - Below the Mass Insulation (Fiberglass) Northern Zone of the USA Only (Refer to "Zip Code Zone Locator" Above)**

- Benefit - R-7.0 Summer & R-1.0 Winter and a Vapor/Moisture Barrier
- Either the 16" or 24" wide product (depending on rafter spacing) is recommended.
- The Staple Tab product is the easiest to work with for this application (but the Standard Edge product is equally effective).
- Install venting (required in Cathedral Ceilings) and mass insulation per local codes and manufacturer's installation instructions.
- A minimum of a 0.75" air space is required on the underside (towards the interior of the home) of the InfraStop<sup>®</sup> product. This air space can be created in one of two installation methods:

1. Tuck the product up into the cavity and staple to the side of the rafter every 2 to 3 inches fully enclosing the rafter cavity.
  2. Staple the product directly to the underside of the rafter every 2 to 3 inches fully enclosing the rafter cavity. Nail 1" x 2" (nominal) furring strips to the underside of the rafter (creating a continuous 0.75" cavity).
- Install interior panel per local codes and manufacturer's installation instructions.



## **Reflective/Scrim Radiant Barrier Installation Instructions:**

### **2. Directly to Roof Deck - Above Fiberglass - Southern Zone of the USA Only**

- Benefit - Radiant Barrier - Blocks 94%+ of radiant heat
- Cut the entire roll of product into 16" or 24" lengths with a miter saw (depending on rafter spacing).
- Begin at the top of the cavity. Run product flush to the decking, parallel to the rafter.
- Staple sheet directly to the deck (Nails poking through the InfraStop<sup>®</sup> product from above will not interfere with performance).
- Do not block any venting (cut around).
- No need to cover rafters (no loop around).
- Ensure that a continuous air space (0.75 inch minimum) is on the bottom side of the InfraStop<sup>®</sup> product (required and for ventilation).
- Install venting and mass insulation per local codes and manufacturer's installation instructions.

### **Ventilation:**

**If ventilation is specified into your cathedral ceiling system, insure that you do not block ventilation paths when you install InfraStop<sup>®</sup>.**

## Review These Important Safety Guidelines Prior to Installation:

- **ALWAYS** check local building codes before installing InfraStop®.
- **ALWAYS** check the area you are insulating and make any needed repairs. Any worn wiring should be replaced before you begin installing InfraStop®.
- **ALWAYS** make sure work areas are well ventilated and well lighted.
- **ALWAYS** use eye protection when operating a staple gun.
- **ALWAYS** use caution and common sense when using a staple gun. Be aware of where electrical wiring is located. Stapling into a wire can cause severe shock or death. **NEVER** staple into electrical wiring.
- **ALWAYS** be careful when working with large pieces of InfraStop® on windy days.
- When installing InfraStop® on bright sunny days, it is best to wear sun glasses.
- Do not work in areas such as attics when temperatures are too hot.
- Visit our website at [www.insulationstop.com](http://www.insulationstop.com) for additional product and installation information.

### **Please Note:**

*The intention of these Installation Instructions and 3-D renderings are for the sole purpose of illustrating the correct location and relative position of the InfraStop® products in specific building assemblies. The correct construction methods and techniques are the responsibility of the installer or contractor. The methods outlined are recommendations on location of the InfraStop® products as a guideline. There are no claims on the part of InfraStop® that these building assemblies are finite standards or meet building code requirements (as they can vary by region).*

## **InfraStop®**

[www.insulationstop.com](http://www.insulationstop.com)

Phone: 800-871-0410

Fax: 888-838-5376

Email: [customer.support@insulationstop.com](mailto:customer.support@insulationstop.com)