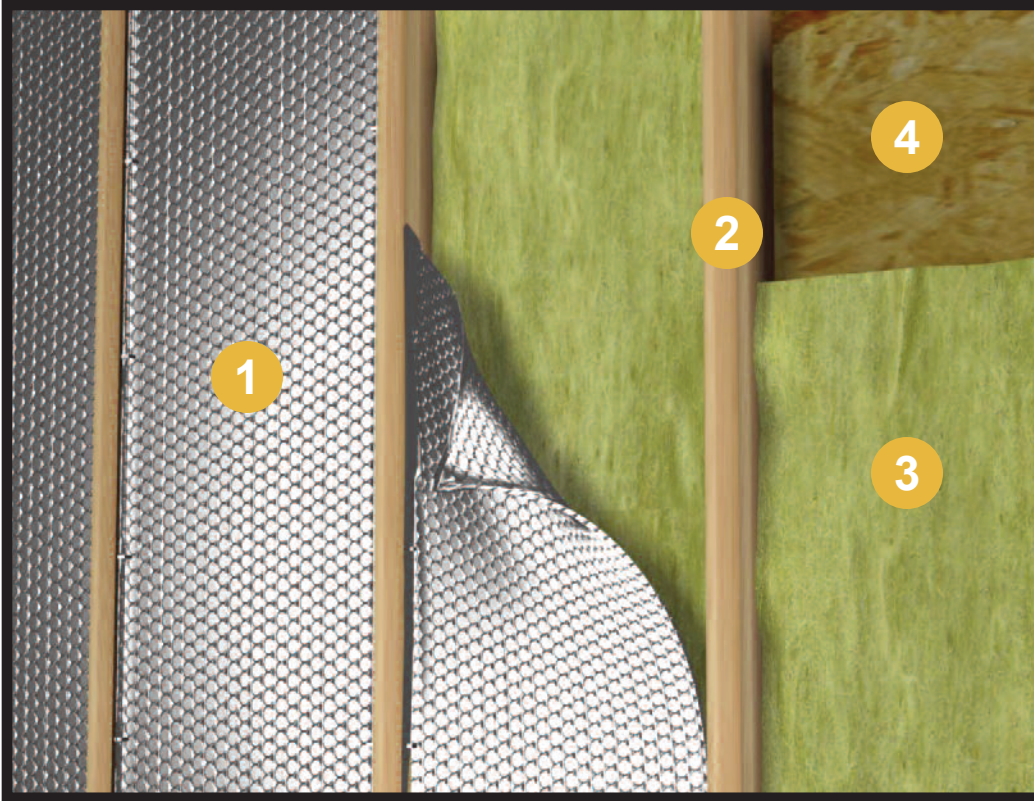


# Wall - Exterior 2" x 4" | (Total R-14)

( R-3.9 and a Vapor/Moisture Barrier for the InfraStop® )

## InfraStop® Installation Instructions



1. InfraStop® Insulation
2. 2"x 4" Stud
3. Un-faced Fiberglass
4. Exterior Panel

### Tools Required:

Safety Glasses  
Staple Gun  
Tape Measure  
Utility Knife/  
Scissors

**Note:** Installation instructions and illustrated drawings are recommendations only, while proper local construction methods are the responsibility of the installer.

### Recommended Products:

Staple Tab, Reflective/Bubble/Bubble/Reflective - Roll: ISSTFDF16050 (16"x 50'), ISSTFDF16100 (16"x 100'), ISSTFDF24050 (24"x 50'), ISSTFDF24100 (24"x 100')

### Installation Instructions:

- Install R-13, un-faced, per manufacturer's specifications.
- Place one corner edge of the InfraStop® in an upper corner of the stud cavity. Staple the product to the side of the stud (creating a 3/4" tab on the product and compressing into the fiberglass (3/4" as well). The edge of the product should be flush with the forward corner of the stud.
- Proceed "down" stapling to the side of the stud every 2"- 3".
- Repeat procedure on opposite stud.
- The Goal: Create a continuous 3/4" air space between the product and the interior panel.
- Finish wall interior.

## **Review These Important Safety Guidelines Prior to Installation:**

- **ALWAYS** check local building codes before installing InfraStop®.
- **ALWAYS** check the area you are insulating and make any needed repairs. Any worn wiring should be replaced before you begin installing InfraStop®.
- **ALWAYS** make sure work areas are well ventilated and well lighted.
- **ALWAYS** use eye protection when operating a staple gun.
- **ALWAYS** use caution and common sense when using a staple gun. Be aware of where electrical wiring is located. Stapling into a wire can cause severe shock or death. **NEVER** staple into electrical wiring.
- **ALWAYS** be careful when working with large pieces of InfraStop® on windy days.
- When installing InfraStop® on bright sunny days, it is best to wear sun glasses.
- Do not work in areas such as attics when temperatures are too hot.
- Visit our website at [www.insulationstop.com](http://www.insulationstop.com) for additional product and installation information.

### ***Please Note:***

*The intention of these Installation Instructions and 3-D renderings are for the sole purpose of illustrating the correct location and relative position of the InfraStop® products in specific building assemblies. The correct construction methods and techniques are the responsibility of the installer or contractor. The methods outlined are recommendations on location of the InfraStop® products as a guideline. There are no claims on the part of InfraStop® that these building assemblies are finite standards or meet building code requirements (as they can vary by region).*

## **InfraStop®**

www.insulationstop.com

Phone: 800-871-0410

Fax: 888-838-5376

Email: [customer.support@insulationstop.com](mailto:customer.support@insulationstop.com)