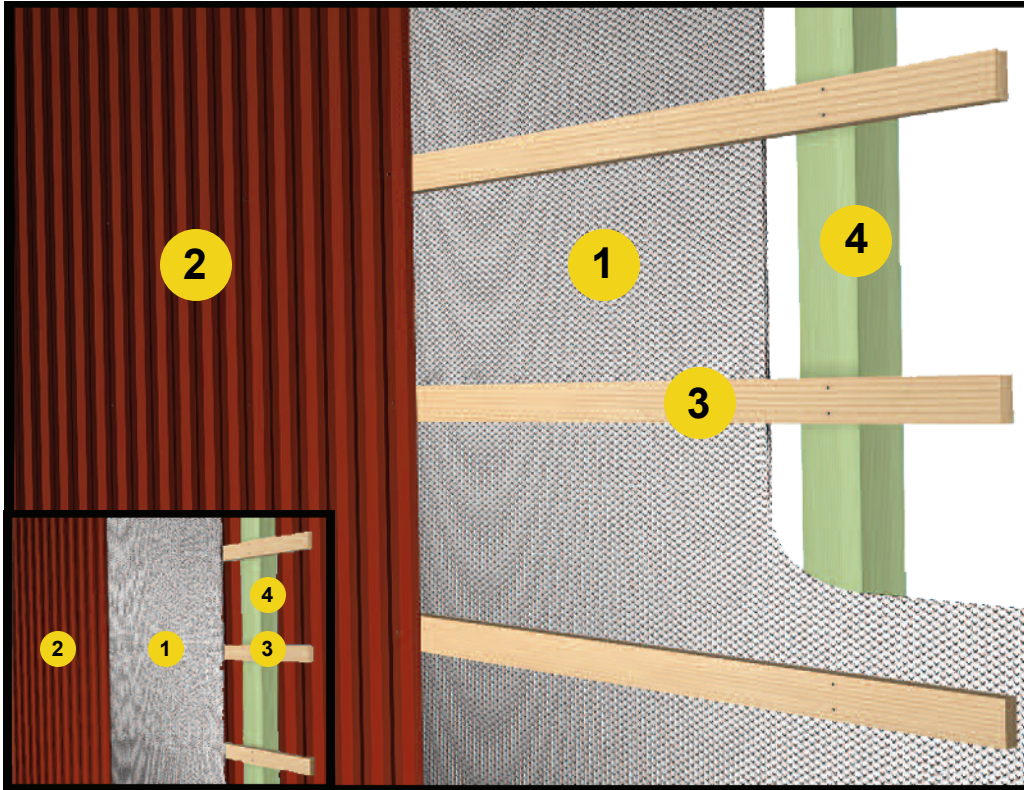


# Post Frame Building / Wall / New

## InfraStop® Installation Instructions



1. InfraStop® Insulation
2. Exterior Wall Panel
3. Girt
4. Post

(Note: Applicable for both diagrams)

### Tools Required:

Safety Glasses  
Tape Measure  
Utility Knife  
Staple Gun

### Recommended Products:

Reflective/Bubble/Bubble/Reflective - Roll: ISFDF48100 (48" x 100')

#### Inside the Girts

Metal Interior • R-6.3 Heat Flow Horizontal Open Interior  
• R-5.3\* Heat Flow Horizontal

#### Outside the Girts

Metal Interior • R-5.5 Heat Flow Horizontal Open Interior  
• R-4.7\* Heat Flow Horizontal

### Installation Instructions: (There are 2 options)

#### 1. Product Inside the Girts

- Staple the InfraStop® Reflective/Bubble/Bubble/Reflective product to the outside of the top girt.
- Staple the product to the inside of the remaining girts. >

- Tape the seams with a InfraStop® Foil Tape (goal is an air-tight, snug seam seal).
- For interior covering, attach 1"x 2" furring strips perpendicular to the girts through the insulation.
- Attach interior panel to the furring strips.
- This will provide a 1" (nominal) air space between the interior panel and the insulation and a 1 1/2" air space between the insulation and the outside panel.

## 2. Product Outside the Girts

- Staple the InfraStop® Reflective/Bubble/Bubble/Reflective product to the outside of the top girt.
- Staple the product to the outside of the remaining girts. Insure there is a drap of at least 3/4" (towards the interior of the building) at the center of each cavity.
- Tape the seams with a InfraStop® Foil Tape (goal is an air-tight, snug seam seal).
- Attach outside panel.
- Attach interior panel to the inside of the girts (if specified).

\* Includes thermal resistance of 1.70 interior air film.

**Calculation Disclaimer:** All values are calculated based on the "ASHRAE Handbook of Fundamentals".

## Review These Important Safety Guidelines Prior to Installation:

- **ALWAYS** check local building codes before installing InfraStop®.
- **ALWAYS** check the area you are insulating and make any needed repairs. Any worn wiring should be replaced before you begin installing InfraStop®.
- **ALWAYS** make sure work areas are well ventilated and well lighted.
- **ALWAYS** use eye protection when operating a staple gun.
- **ALWAYS** use caution and common sense when using a staple gun. Be aware of where electrical wiring is located. Stapling into a wire can cause severe shock or death. **NEVER** staple into electrical wiring.
- **ALWAYS** be careful when working with large pieces of InfraStop® on windy days.
- When installing InfraStop® on bright sunny days, it is best to wear sun glasses.
- Do not work in areas such as attics when temperatures are too hot.
- Visit our website at [www.insulationstop.com](http://www.insulationstop.com) for additional product and installation information.

### Please Note:

*The intention of these Installation Instructions and 3-D renderings are for the sole purpose of illustrating the correct location and relative position of the InfraStop® products in specific building assemblies. The correct construction methods and techniques are the responsibility of the installer or contractor. The methods outlined are recommendations on location of the InfraStop® products as a guideline. There are no claims on the part of InfraStop® that these building assemblies are finite standards or meet building code requirements (as they can vary by region).*

## InfraStop®

[www.insulationstop.com](http://www.insulationstop.com)

Phone: 800-871-0410

Fax: 888-838-5376

Email: [customer.support@insulationstop.com](mailto:customer.support@insulationstop.com)